

## Mast 20m

Alternative suggestion for a 4000W halogen lighting

Based on an area of 50 x 50 m with a centered mast position.

presented by:

**medlight**

Inhaberin: Katharina Müller

Industriering 45

D-41751 Viersen

Postfach 110453

Fon: +49 2162.890 26-48

Fax: +49 2162.890 26-49

Mobile: +49 179.228 45 33

katharina.mueller@medlight.de

**www.medlight.de**

---

**Content**

---

Mast 20 m	
Project cover sheet	1
Content	2
LemTec headlight LEM-F570TS 140W	
Luminaire data sheet	3
LEM-F570TS 140W	
UGR table	4
Luminance graph	5
LEMTec floodlight LEM-F570FG 140W	
Luminaire data sheet	6
LEM-F570FG 140W	
UGR table	7
Luminance graph	8
Outdoor sketch 1	
Luminaire list of items	9
Ground plan	10
Luminaire (position plan)	11
Luminaire (coordinates list)	12
3D Rendering	14
pseudo-colour rendering	15
outside surfaces	
floor element 1	
area 1	
isolines (E)	16

presented by:

**medlight**

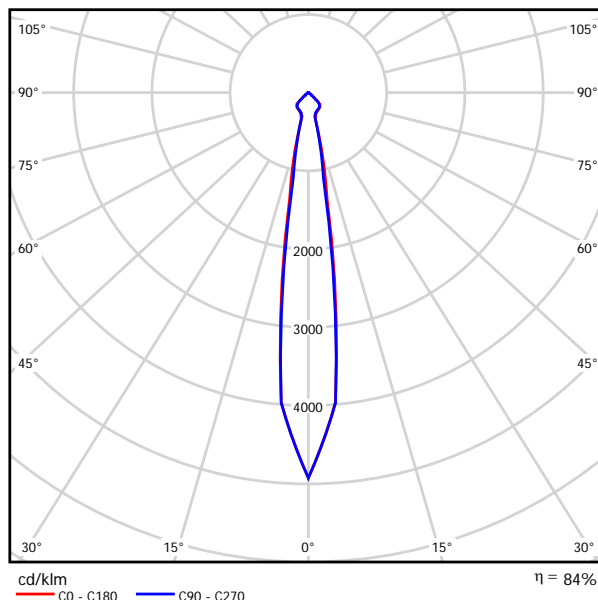
Inhaberin: Katharina Müller

Industriering 45  
D-41751 Viersen  
Postfach 11 04 53Fon: +49 2162.890 26-48  
Fax: +49 2162.890 26-49  
Mobile: +49 179.228 45 33katharina.mueller@medlight.de  
**www.medlight.de**

**LemTec Headlight LEM-F570TS 140W / Luminaire Data Sheet**

Please find a picture of the luminaire in our catalogue

light emission 1:



light emission 1:

Luminaire classification according to DIN: A60  
CIE Flux Code: 86 100 100 96 92

Glare rating according to UGR													
n Ceiling		70	70	50	50	30	n Walls		50	30	50	30	30
n Floor		20	20	20	20	20	n Floor		20	20	20	20	20
Room Dimensions X Y		viewing direction at right angles to luminaire axis					viewing direction alongside luminaire axis						
2H	2H	22.9	23.8	23.2	24.0	24.2	22.2	23.0	22.5	23.2	23.4		
	3H	22.8	23.5	23.1	23.8	24.0	22.1	22.8	22.4	23.0	23.3		
	4H	22.7	23.4	23.0	23.7	23.9	22.0	22.7	22.3	22.9	23.2		
	6H	22.6	23.3	23.0	23.6	23.8	21.9	22.6	22.2	22.8	23.1		
	8H	22.6	23.2	22.9	23.5	23.8	21.9	22.5	22.2	22.8	23.1		
12H	22.6	23.1	22.9	23.4	23.8	21.8	22.4	22.2	22.7	23.0			
4H	2H	22.7	23.4	23.0	23.7	24.0	22.0	22.7	22.4	23.0	23.3		
	3H	22.6	23.2	22.9	23.5	23.8	21.9	22.5	22.3	22.8	23.1		
	4H	22.5	23.0	22.9	23.4	23.7	21.8	22.3	22.2	22.7	23.0		
	6H	22.4	22.9	22.9	23.2	23.6	21.8	22.2	22.2	22.5	22.9		
	8H	22.4	22.8	22.8	23.2	23.6	21.7	22.1	22.1	22.5	22.9		
12H	22.4	22.7	22.8	23.1	23.5	21.7	22.0	22.1	22.4	22.8			
8H	4H	22.4	22.8	22.8	23.2	23.6	21.7	22.1	22.1	22.5	22.9		
	6H	22.3	22.6	22.8	23.0	23.5	21.6	21.9	22.1	22.4	22.8		
	8H	22.3	22.5	22.7	23.0	23.4	21.6	21.8	22.1	22.3	22.8		
	12H	22.2	22.4	22.7	22.9	23.4	21.5	21.8	22.0	22.2	22.7		
	12H	4H	22.4	22.7	22.8	23.1	23.5	21.7	22.0	22.1	22.4	22.8	
6H	22.3	22.5	22.7	23.0	23.4	21.6	21.8	22.1	22.3	22.8			
8H	22.2	22.4	22.7	22.9	23.4	21.5	21.8	22.0	22.2	22.7			
Variation of viewer's position for luminaire spacing S													
S = 1.0H		+2.5 / -4.8					+2.4 / -5.3						
S = 1.5H		+4.2 / -25.1					+4.5 / -24.4						
S = 2.0H		+6.2 / -94.8					+6.5 / -94.1						
standard table		BK00					BK00						
adjustment summand		4.0					3.3						
adjusted glare indexes related to 11.200 lm total luminous flux													

**LemTec Headlight LEM-F570TS 140W / UGR Table**

Luminaire: LemTec Headlight LEM-F570TS 140W

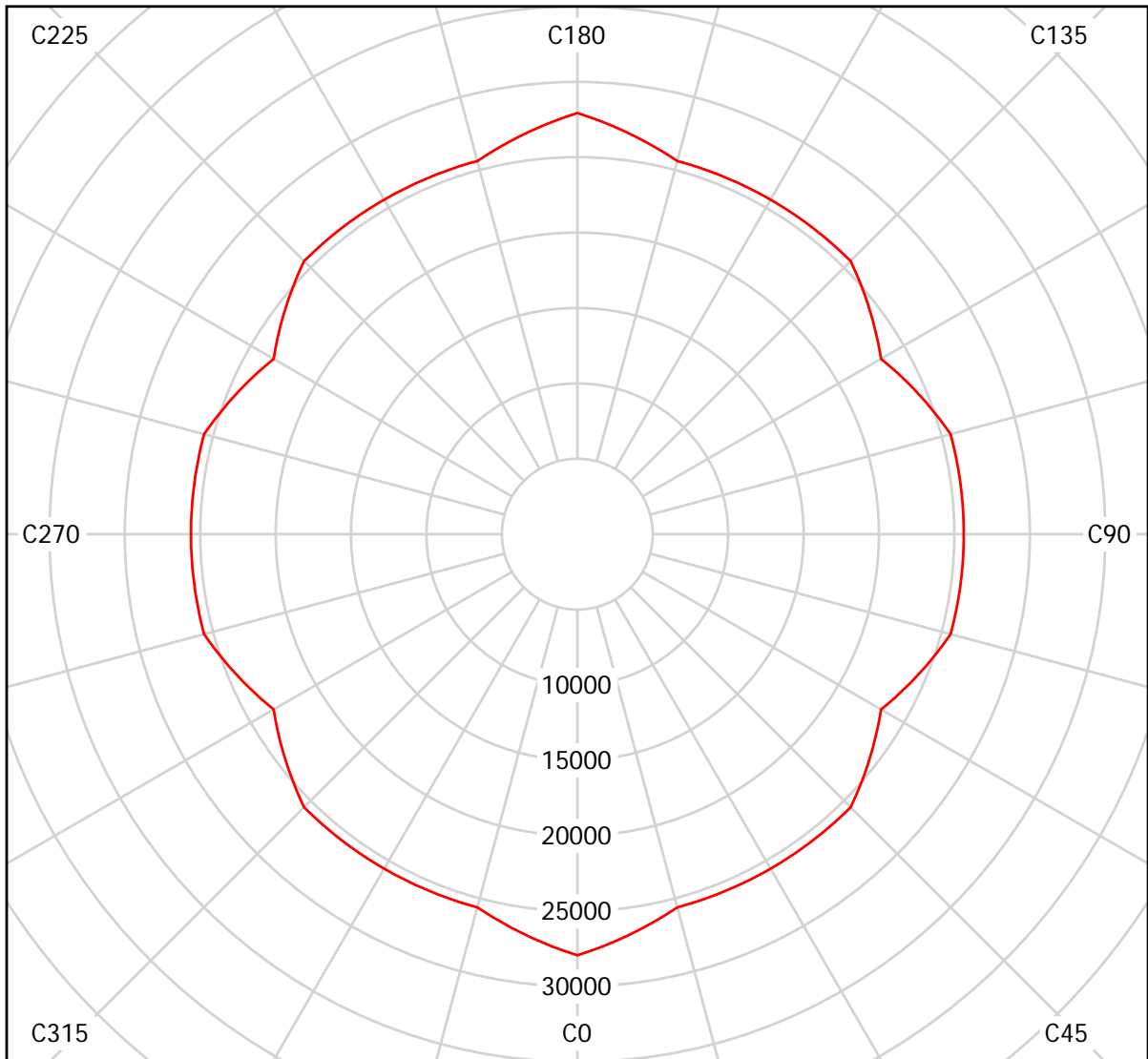
Lamps: 2 x LemTec 70W LED

<b>Glare Rating according to UGR</b>											
$\rho$ Ceiling	70	70	50	50	30	70	70	50	50	30	
$\rho$ Walls	50	30	50	30	30	50	30	50	30	30	
$\rho$ Floor	20	20	20	20	20	20	20	20	20	20	
Room dimensions X      Y		viewing direction at right angles to luminaire axis					viewing direction alongside luminaire axis				
2H	2H	22.9	23.8	23.2	24.0	24.2	22.2	23.0	22.5	23.2	23.4
	3H	22.8	23.5	23.1	23.8	24.0	22.1	22.8	22.4	23.0	23.3
	4H	22.7	23.4	23.0	23.7	23.9	22.0	22.7	22.3	22.9	23.2
	6H	22.6	23.3	23.0	23.6	23.8	21.9	22.6	22.2	22.8	23.1
	8H	22.6	23.2	22.9	23.5	23.8	21.9	22.5	22.2	22.8	23.1
	12H	22.6	23.1	22.9	23.4	23.8	21.8	22.4	22.2	22.7	23.0
4H	2H	22.7	23.4	23.0	23.7	24.0	22.0	22.7	22.4	23.0	23.3
	3H	22.6	23.2	22.9	23.5	23.8	21.9	22.5	22.3	22.8	23.1
	4H	22.5	23.0	22.9	23.4	23.7	21.8	22.3	22.2	22.7	23.0
	6H	22.4	22.9	22.9	23.2	23.6	21.8	22.2	22.2	22.5	22.9
	8H	22.4	22.8	22.8	23.2	23.6	21.7	22.1	22.1	22.5	22.9
	12H	22.4	22.7	22.8	23.1	23.5	21.7	22.0	22.1	22.4	22.8
8H	4H	22.4	22.8	22.8	23.2	23.6	21.7	22.1	22.1	22.5	22.9
	6H	22.3	22.6	22.8	23.0	23.5	21.6	21.9	22.1	22.4	22.8
	8H	22.3	22.5	22.7	23.0	23.4	21.6	21.8	22.1	22.3	22.8
	12H	22.2	22.4	22.7	22.9	23.4	21.5	21.8	22.0	22.2	22.7
12H	4H	22.4	22.7	22.8	23.1	23.5	21.7	22.0	22.1	22.4	22.8
	6H	22.3	22.5	22.7	23.0	23.4	21.6	21.8	22.1	22.3	22.8
	8H	22.2	22.4	22.7	22.9	23.4	21.5	21.8	22.0	22.2	22.7
variation of viewer's position for luminaire spacing S											
S = 1.0H	+2.5 / -4.8					+2.4 / -5.3					
S = 1.5H	+4.2 / -25.1					+4.5 / -24.4					
S = 2.0H	+6.2 / -94.8					+6.5 / -94.1					
standard table	BK00					BK00					
adjustment summand	4.0					3.3					
adjusted glare indexes related to 11.200 lm total luminous flux											

The UGR values are calculated in line with CIE Publ. 117. Spacing-to-Height-Ratio = 0.25.

**LemTec Headlight LEM-F570TS 140W / Luminance Graph**

Luminaire: LemTec Headlight LEM-F570TS 140W  
Lamps: 2 x LemTec 70W LED



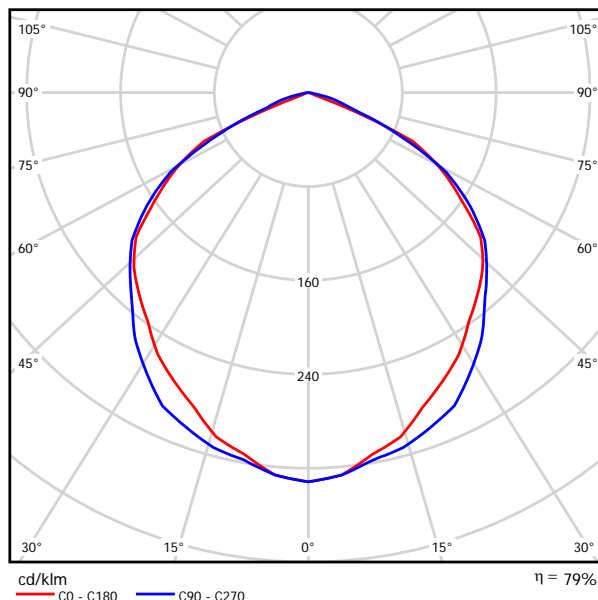
cd/m<sup>2</sup>

— g = 55.0°    — g = 65.0°    — g = 75.0°

**LemTec Floodlight LEM-F570FG 140W / Luminaire Data Sheet**

Please find a picture of this luminaire in our catalogue.

Light emission 1:



Luminaire classification according to DIN: A40  
CIE Flux Code: 52 87 100 100 80

Light emission 1:

Glare Rating according to UGR											
n Ceiling		70	70	50	50	30	70	70	50	50	30
n Walls		50	30	50	30	30	50	30	50	30	30
n Floor		20	20	20	20	20	20	20	20	20	20
Room Dimensions X Y		viewing direction at right angles to luminaire axis					viewing direction alongside luminaire axis				
2H	2H	25.4	26.6	25.7	26.8	27.1	25.4	26.6	25.7	26.9	27.1
	3H	25.8	26.9	26.1	27.2	27.4	26.0	27.1	26.3	27.4	27.6
	4H	25.7	26.8	26.1	27.0	27.3	26.0	27.1	26.4	27.4	27.6
	6H	25.7	26.6	26.0	26.9	27.2	26.0	27.0	26.4	27.3	27.6
	8H	25.6	26.5	26.0	26.8	27.2	26.0	26.9	26.3	27.2	27.5
4H	12H	25.6	26.5	25.9	26.8	27.1	26.0	26.8	26.3	27.1	27.5
	2H	25.9	26.9	26.2	27.2	27.5	25.9	26.9	26.2	27.2	27.5
	3H	26.3	27.1	26.6	27.5	27.8	26.5	27.4	26.9	27.7	28.0
	4H	26.2	27.0	26.6	27.3	27.7	26.6	27.4	27.0	27.7	28.1
	6H	26.1	26.8	26.5	27.2	27.6	26.6	27.3	27.0	27.6	28.0
8H	8H	26.1	26.7	26.5	27.1	27.5	26.6	27.2	27.0	27.6	28.0
	12H	26.1	26.6	26.5	27.0	27.4	26.5	27.1	27.0	27.5	27.9
	4H	26.1	26.7	26.6	27.1	27.5	26.5	27.1	27.0	27.5	27.9
	6H	26.1	26.6	26.5	27.0	27.4	26.5	27.0	27.0	27.4	27.9
	8H	26.0	26.5	26.5	26.9	27.4	26.5	26.9	27.0	27.4	27.8
12H	12H	26.0	26.4	26.5	26.8	27.3	26.5	26.8	27.0	27.3	27.8
	4H	26.1	26.6	26.6	27.1	27.5	26.5	27.0	27.0	27.5	27.9
	6H	26.0	26.5	26.5	26.9	27.4	26.5	26.9	27.0	27.4	27.8
	8H	26.0	26.4	26.5	26.8	27.3	26.5	26.8	27.0	27.3	27.8
variation of viewer's position for luminaire spacing S											
S = 1.0H		+0.4 / -0.6					+0.1 / -0.3				
S = 1.5H		+0.5 / -0.7					+0.6 / -0.7				
S = 2.0H		+1.6 / -6.5					+1.6 / -3.2				
standard table		BK01					BK02				
adjustment summand		7.3					8.1				
adjusted glare indexes related to 11.200 lm total luminous flux											

**LemTec Floodlight LEM-F570FG 140W / UGR Table**

Luminaire: LemTec floodlight LEM-F570FG 140W

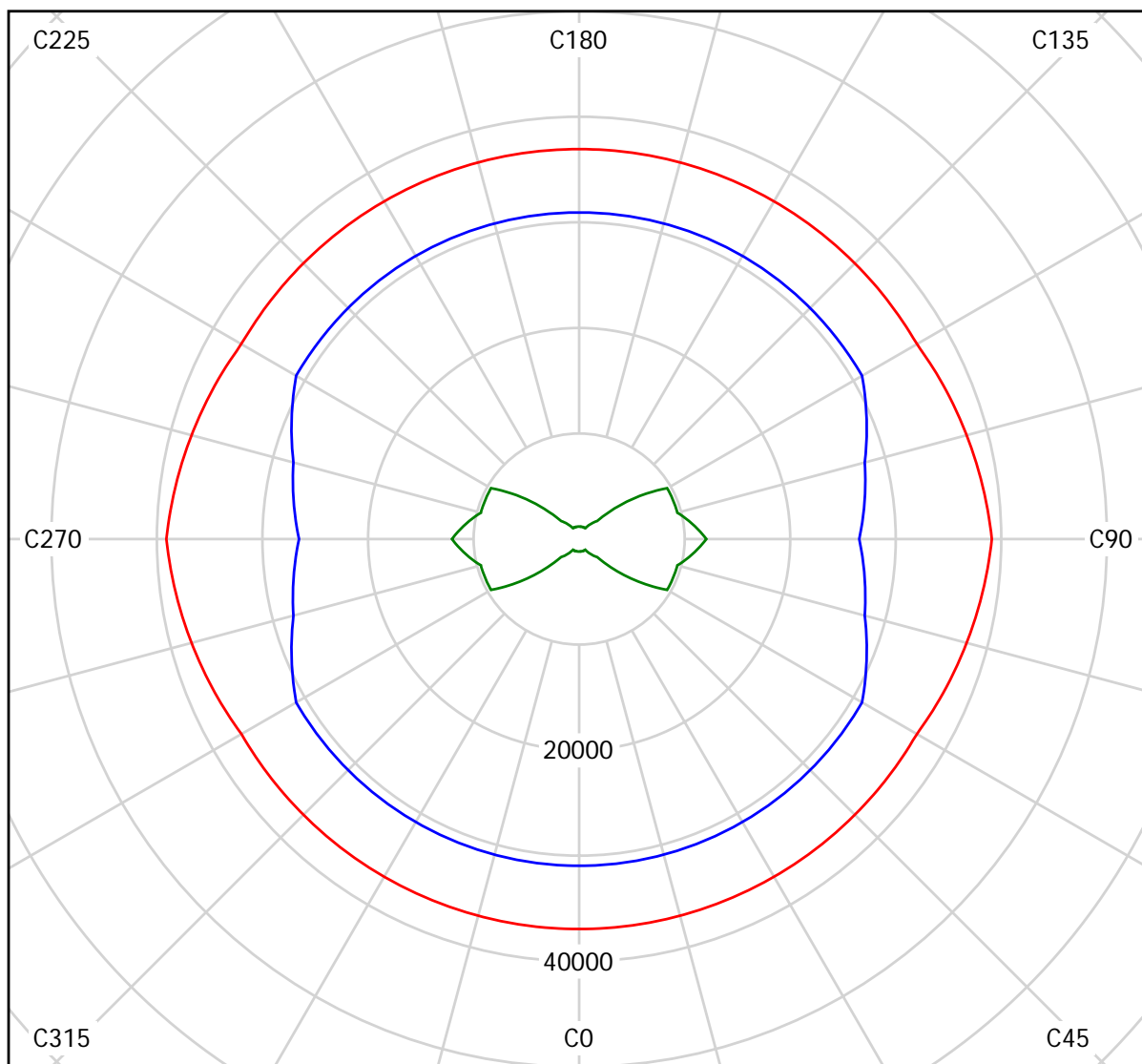
Lamps: 2 x LemTec 70W LED

<b>Glare Rating according to UGR</b>											
$\rho$ Ceiling	70	70	50	50	30	70	70	50	50	30	
$\rho$ Walls	50	30	50	30	30	50	30	50	30	30	
$\rho$ Floor	20	20	20	20	20	20	20	20	20	20	
Room dimensions X      Y		viewing direction at right angles to luminaire axis					viewing direction alongside luminaire axis				
2H	2H	25.4	26.6	25.7	26.8	27.1	25.4	26.6	25.7	26.9	27.1
	3H	25.8	26.9	26.1	27.2	27.4	26.0	27.1	26.3	27.4	27.6
	4H	25.7	26.8	26.1	27.0	27.3	26.0	27.1	26.4	27.4	27.6
	6H	25.7	26.6	26.0	26.9	27.2	26.0	27.0	26.4	27.3	27.6
	8H	25.6	26.5	26.0	26.8	27.2	26.0	26.9	26.3	27.2	27.5
4H	12H	25.6	26.5	25.9	26.8	27.1	26.0	26.8	26.3	27.1	27.5
	2H	25.9	26.9	26.2	27.2	27.5	25.9	26.9	26.2	27.2	27.5
	3H	26.3	27.1	26.6	27.5	27.8	26.5	27.4	26.9	27.7	28.0
	4H	26.2	27.0	26.6	27.3	27.7	26.6	27.4	27.0	27.7	28.1
	6H	26.1	26.8	26.5	27.2	27.6	26.6	27.3	27.0	27.6	28.0
8H	8H	26.1	26.7	26.5	27.1	27.5	26.6	27.2	27.0	27.6	28.0
	12H	26.1	26.6	26.5	27.0	27.4	26.5	27.1	27.0	27.5	27.9
	4H	26.1	26.7	26.6	27.1	27.5	26.5	27.1	27.0	27.5	27.9
	6H	26.1	26.6	26.5	27.0	27.4	26.5	27.0	27.0	27.4	27.9
12H	8H	26.0	26.5	26.5	26.9	27.4	26.5	26.9	27.0	27.4	27.8
	12H	26.0	26.4	26.5	26.8	27.3	26.5	26.8	27.0	27.3	27.8
	4H	26.1	26.6	26.6	27.1	27.5	26.5	27.0	27.0	27.5	27.9
12H	6H	26.0	26.5	26.5	26.9	27.4	26.5	26.9	27.0	27.4	27.8
	8H	26.0	26.4	26.5	26.8	27.3	26.5	26.8	27.0	27.3	27.8
	8H	26.0	26.4	26.5	26.8	27.3	26.5	26.8	27.0	27.3	27.8
variation of viewer's position for luminaire spacing S											
S = 1.0H		+0.4 / -0.6					+0.1 / -0.3				
S = 1.5H		+0.5 / -0.7					+0.6 / -0.7				
S = 2.0H		+1.6 / -6.5					+1.6 / -3.2				
standard table		BK01					BK02				
adjustment summand		7.3					8.1				
adjusted glare indexes related to 11.200 lm total luminous flux											

The UGR values are calculated in line with CIE Publ. 117. Spacing-to-Height-Ratio = 0.25.

### LemTec Floodlight LEM-F570FG 140W / Luminance Graph

Luminaire: LemTec floodlight LEM-F570FG 140W  
Lamps: 2 x LemTec 70W LED



$\text{cd/m}^2$

—  $g = 55.0^\circ$     —  $g = 65.0^\circ$     —  $g = 75.0^\circ$

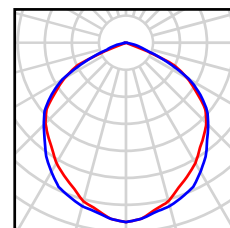


**Outdoor Sketch 1 / Luminaire List of Items**

4 pieces

LemTec floodlight LEM-F570FG 140W  
article no.: floodlight  
luminaire luminous flux: 11.200 lm  
luminaire performance: 140.0 W  
luminaire classification according to DIN: A40  
CIE Flux Code: 52 87 100 100 80  
equipment: 2 x LemTec 70W LED  
(adjustment factor 1.000).

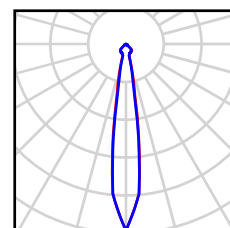
Please find a picture  
of the luminaire  
in our catalogue.



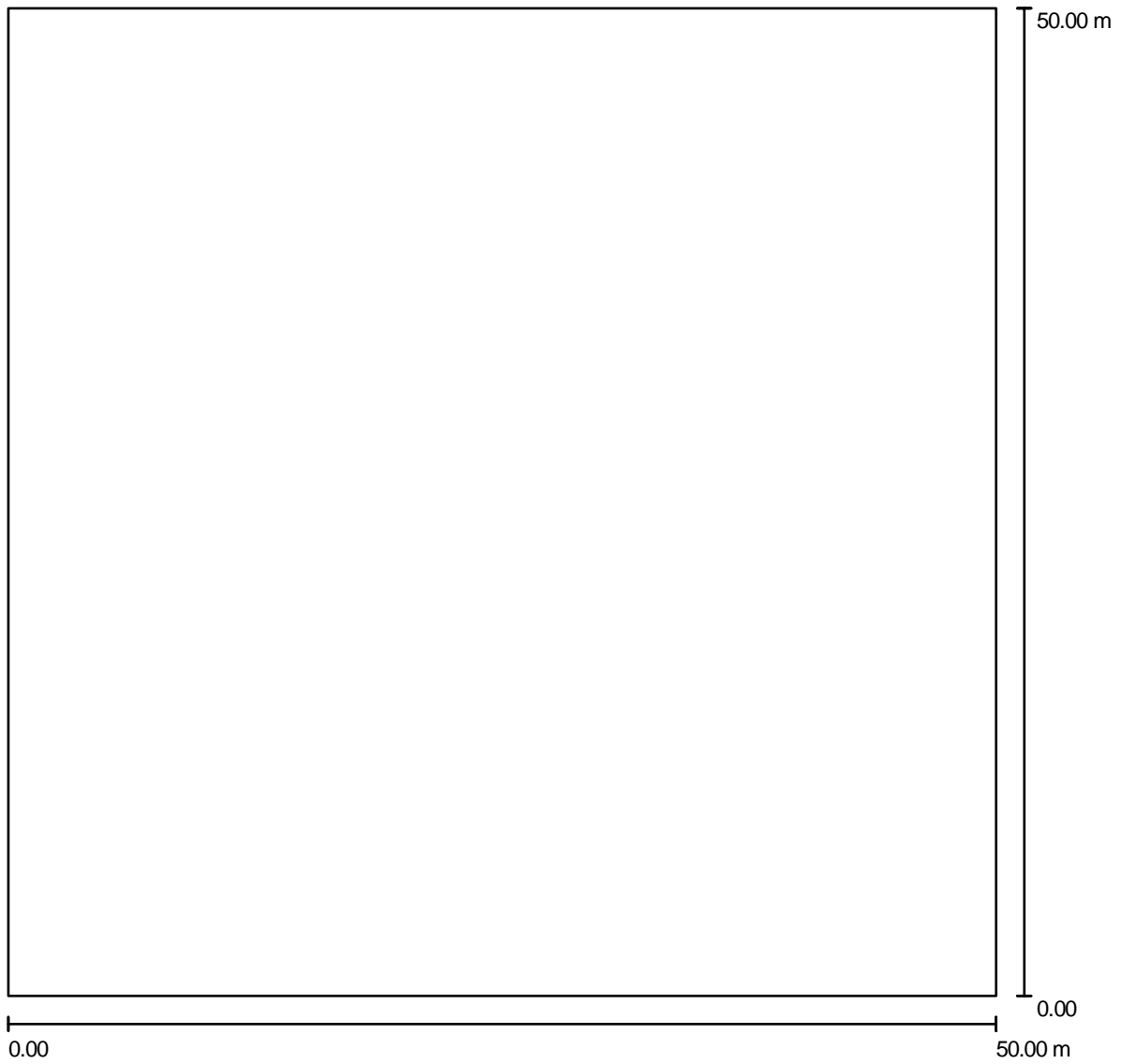
4 pieces

LemTec headlight LEM-F570TS 140W  
article no.: headlight  
luminaire luminous flux: 11.200 lm  
luminaire performance: 140.0 W  
luminaire classification according to DIN: A60  
CIE Flux Code: 86 100 100 96 92  
equipment: 2 x LemTec 70W LED  
(adjustment factor 1.000).

Please find a picture  
of the luminaire  
in our catalogue.

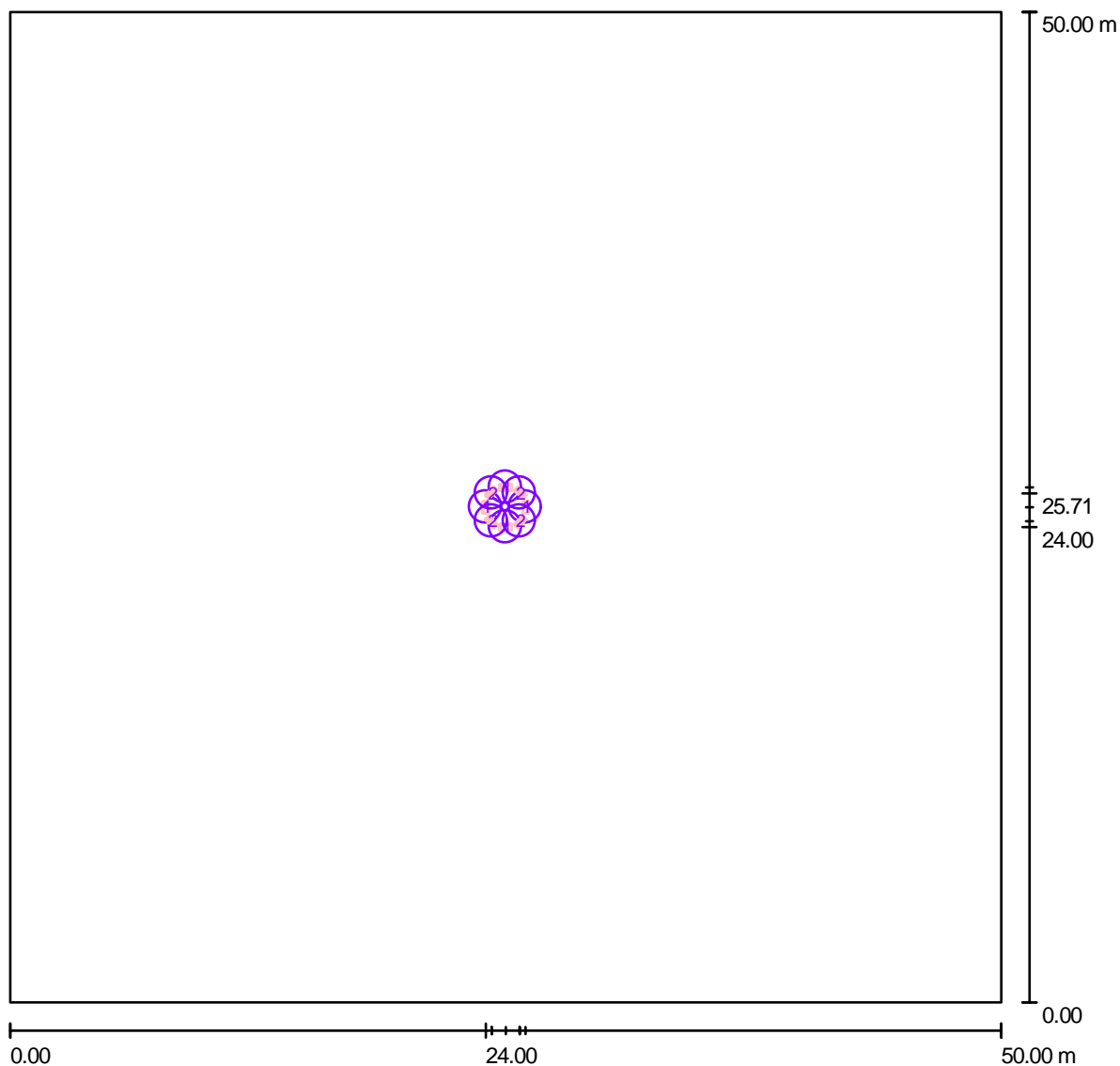


**Outdoor Sketch 1 / Ground Plan**



Scale 1 : 358

**Outdoor Sketch 1 / Luminaire (Position Plan)**



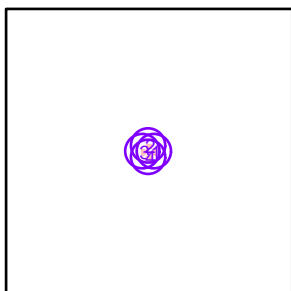
Scale 1 : 358

**Luminaire list of items**

No.	pieces	description
1	4	LemTec floodlight LEM-F570FG 140W
2	4	LemTec headlight LEM-F570TS 140W

**Outdoor Sketch 1 / Luminaire (Coordinates List)****LemTec floodlight LEM-F570FG 140W**

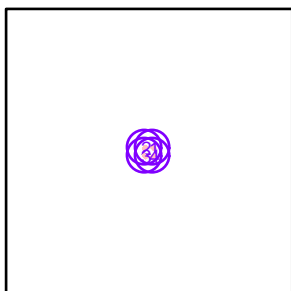
11.200 lm, 140.0 W, 1 x 2 x LemTec 70W LED (adjustment factor 1.000).



No.	position [m]			rotation [°]		
	X	Y	Z	X	Y	Z
1	26.000	25.000	20.000	0.0	0.0	0.0
2	25.000	26.000	20.000	0.0	0.0	90.0
3	24.000	25.000	20.000	0.0	0.0	180.0
4	25.000	24.000	20.000	0.0	0.0	-90.0

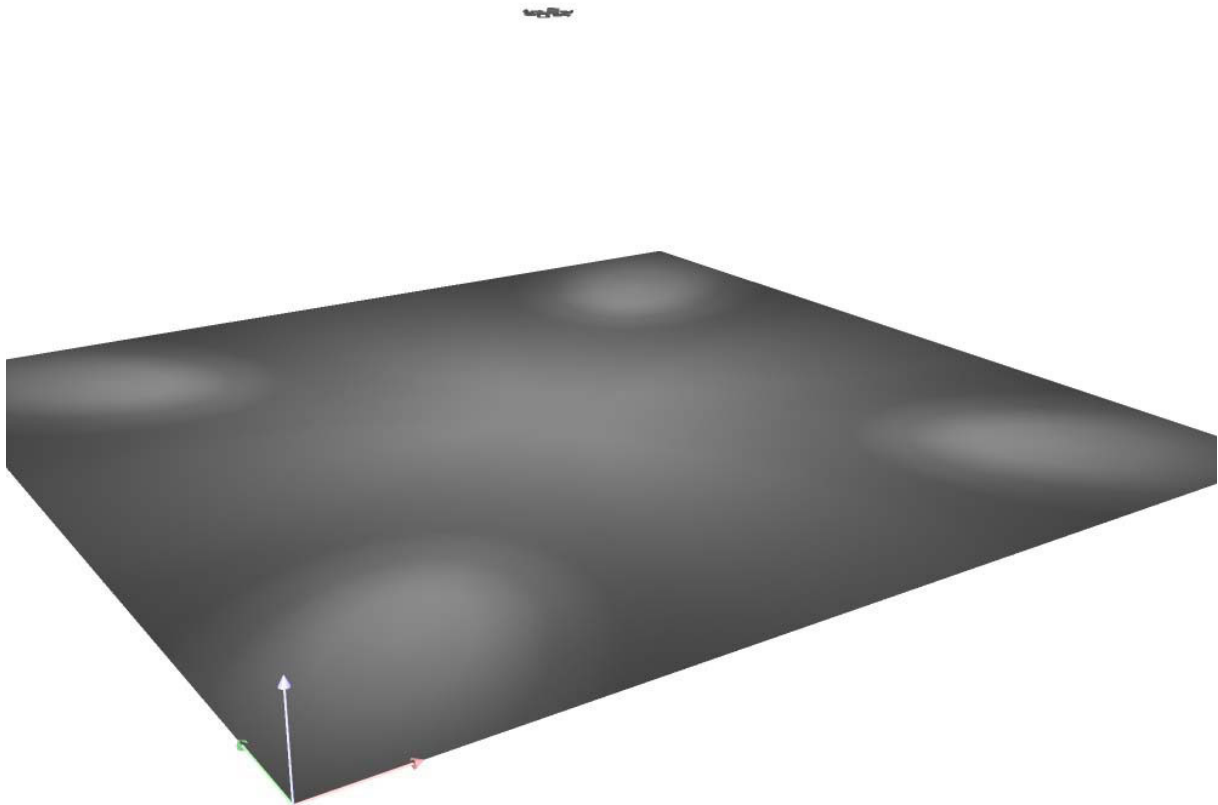
**Outdoor Sketch 1 / Luminaire (Coordinates List)****LemTec headlight LEM-F570TS 140W**

11.200 lm, 140.0 W, 1 x 2 x LemTec 70W LED (adjustment factor 1.000).

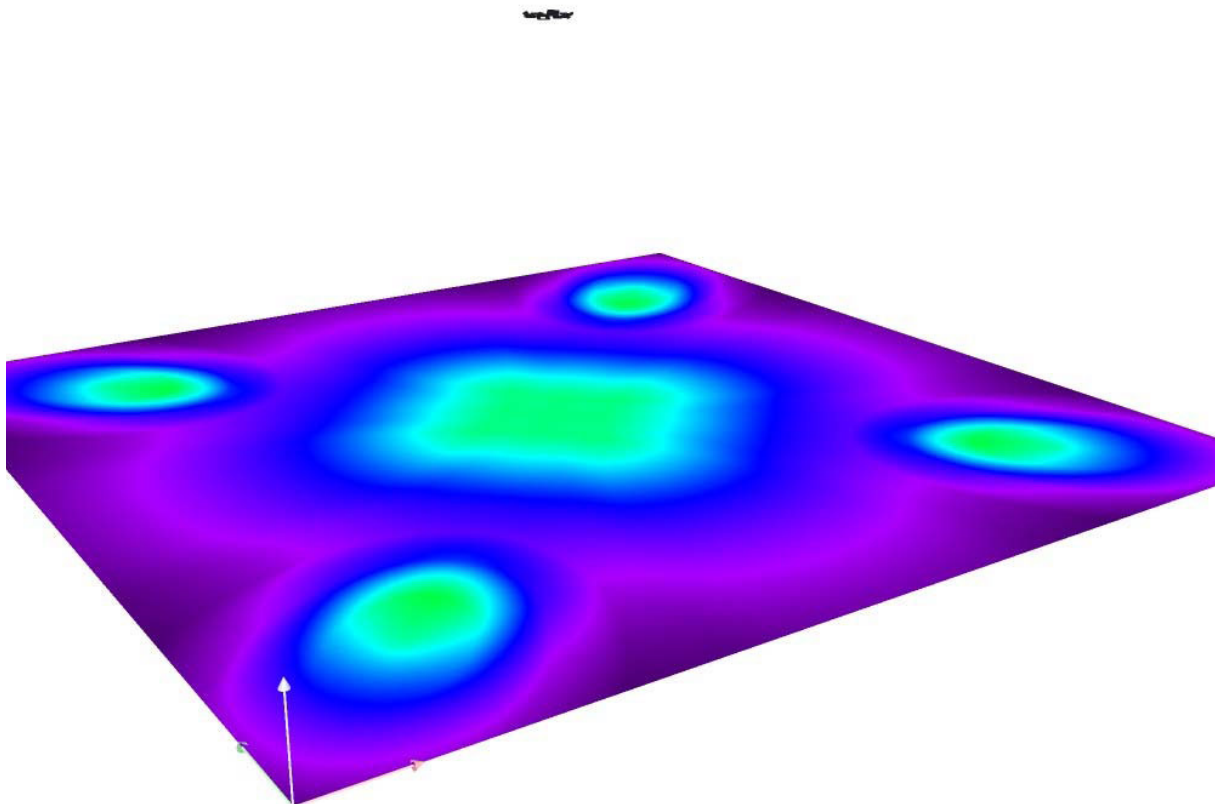


No.	position [m]			rotation [°]		
	X	Y	Z	X	Y	Z
1	25.707	25.707	20.000	0.0	-50.0	45.0
2	24.293	25.707	20.000	0.0	-50.0	135.0
3	24.293	24.293	20.000	0.0	-50.0	-135.0
4	25.707	24.293	20.000	0.0	-50.0	-45.0

**Outdoor Sketch 1 / 3D Rendering**

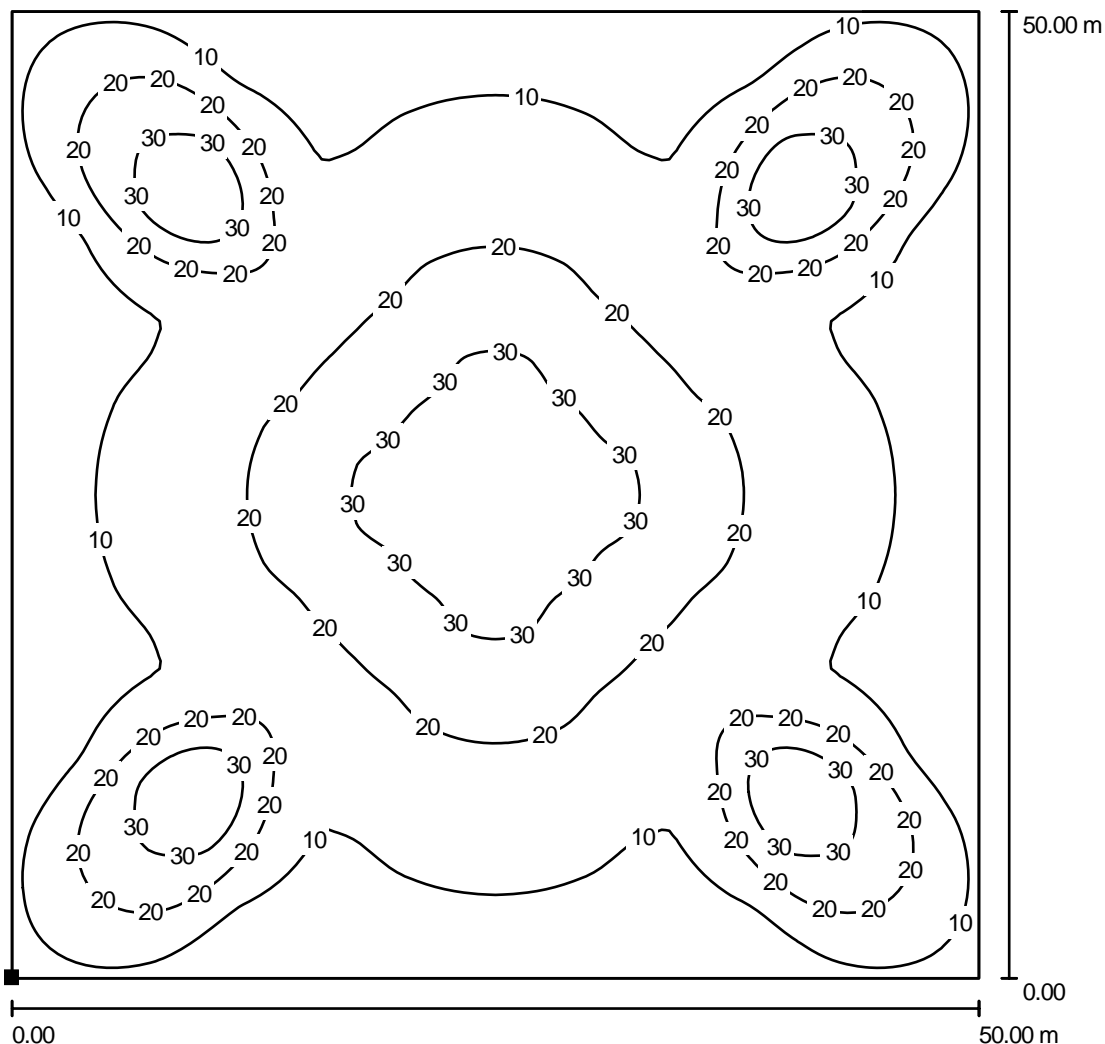


**Outdoor Sketch 1 / Pseudo-Colour Rendering**



0 10 20 30 40 50 60 70 80 lx

**Outdoor Sketch 1 / Floor Element 1 / Area 1 / Isolines (E)**



values in lux, scale 1 : 391

position of the surface in  
the outdoor sketch:  
marked point:  
(0.000 m, 0.000 m, 0.000 m)



raster: 128 x 128 points

$E_m$ [lx]	$E_{min}$ [lx]	$E_{max}$ [lx]	$g_1$	$g_2$
16	4.50	37	0.273	0.121



## **Mast 36m**

Alternative suggestion for a 8000W halogen lighting

Based on an area of 50 x 50 m with a centered mast position.

presented by:

**medlight**

Inhaberin: Katharina Müller

Industriering 45

D-41751 Viersen

Postfach 110453

Fon: +49 2162.890 26-48

Fax: +49 2162.890 26-49

Mobile: +49 179.228 45 33

katharina.mueller@medlight.de

**www.medlight.de**

**Content**

Mast 36 m	
Project cover sheet	1
Content	2
LemTec headlight LEM-F570TS 140W	
Luminaire data sheet	3
LEM-F570TS 140W	
UGR table	4
Luminance graph	5
LEMTec floodlight LEM-F570FG 140W	
Luminaire data sheet	6
LEM-F570FG 140W	
UGR table	7
Luminance graph	8
Outdoor sketch 1	
Luminaire list of items	9
Ground plan	10
Luminaire (position plan)	11
Luminaire (coordinates list)	12
3D Rendering	13
pseudo-colour rendering	14
outside surfaces	
floor element 1	
area 1	
isolines (E)	15

presented by:

**medlight**

Inhaberin: Katharina Müller

Industriering 45  
D-41751 Viersen  
Postfach 11 04 53

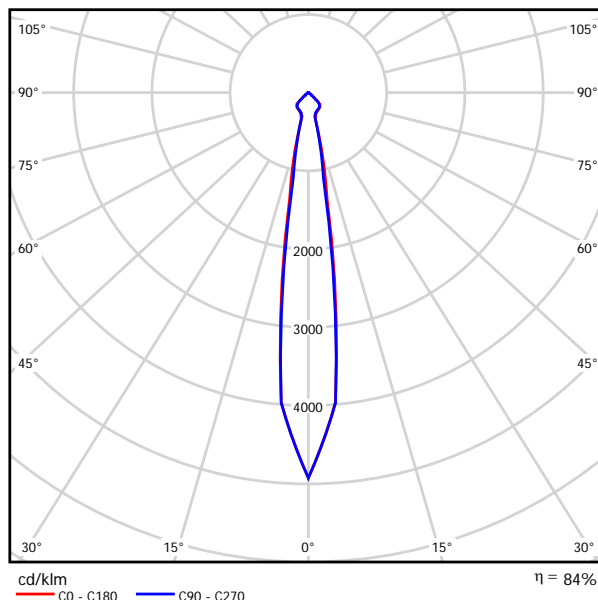
Fon: +49 2162.890 26-48  
Fax: +49 2162.890 26-49  
Mobile: +49 179.228 45 33

katharina.mueller@medlight.de  
[www.medlight.de](http://www.medlight.de)

**LemTec Headlight LEM-F570TS 140W / Luminaire Data Sheet**

Please find a picture of the luminaire in our catalogue.

light emission 1:



Luminaire classification according to DIN: A60  
CIE Flux Code: 86 100 100 96 92

light emission 1:

Glare rating according to UGR													
n Ceiling		70	70	50	50	30	n Walls		50	30	50	30	30
n Floor		20	20	20	20	20	n Floor		20	20	20	20	20
Room Dimensions X Y		viewing direction at right angles to luminaire axis					viewing direction alongside luminaire axis						
2H	2H	22.9	23.8	23.2	24.0	24.2	22.2	23.0	22.5	23.2	23.4		
	3H	22.8	23.5	23.1	23.8	24.0	22.1	22.8	22.4	23.0	23.3		
	4H	22.7	23.4	23.0	23.7	23.9	22.0	22.7	22.3	22.9	23.2		
	6H	22.6	23.3	23.0	23.6	23.8	21.9	22.6	22.2	22.8	23.1		
	8H	22.6	23.2	22.9	23.5	23.8	21.9	22.5	22.2	22.8	23.1		
4H	12H	22.6	23.1	22.9	23.4	23.8	21.8	22.4	22.2	22.7	23.0		
	2H	22.7	23.4	23.0	23.7	24.0	22.0	22.7	22.4	23.0	23.3		
	3H	22.6	23.2	22.9	23.5	23.8	21.9	22.5	22.3	22.8	23.1		
	4H	22.5	23.0	22.9	23.4	23.7	21.8	22.3	22.2	22.7	23.0		
	6H	22.4	22.9	22.9	23.2	23.6	21.8	22.2	22.2	22.5	22.9		
8H	8H	22.4	22.8	22.8	23.2	23.6	21.7	22.1	22.1	22.5	22.9		
	12H	22.4	22.7	22.8	23.1	23.5	21.7	22.0	22.1	22.4	22.8		
	4H	22.4	22.8	22.8	23.2	23.6	21.7	22.1	22.1	22.5	22.9		
	6H	22.3	22.6	22.8	23.0	23.5	21.6	21.9	22.1	22.4	22.8		
	8H	22.3	22.5	22.7	23.0	23.4	21.6	21.8	22.1	22.3	22.8		
12H	12H	22.2	22.4	22.7	22.9	23.4	21.5	21.8	22.0	22.2	22.7		
	4H	22.4	22.7	22.8	23.1	23.5	21.7	22.0	22.1	22.4	22.8		
	6H	22.3	22.5	22.7	23.0	23.4	21.6	21.8	22.1	22.3	22.8		
8H	22.2	22.4	22.7	22.9	23.4	21.5	21.8	22.0	22.2	22.7			
variation of viewer's position for luminaire spacing S													
S = 1.0H		+2.5 / -4.8					+2.4 / -5.3						
S = 1.5H		+4.2 / -25.1					+4.5 / -24.4						
S = 2.0H		+6.2 / -94.8					+6.5 / -94.1						
standard table		BK00					BK00						
adjustment summand		4.0					3.3						
adjusted glare indexes related to 11.200 lm total luminous flux													

**LemTec Headlight LEM-F570TS 140W / UGR Table**

Luminaire: LemTec Headlight LEM-F570TS 140W

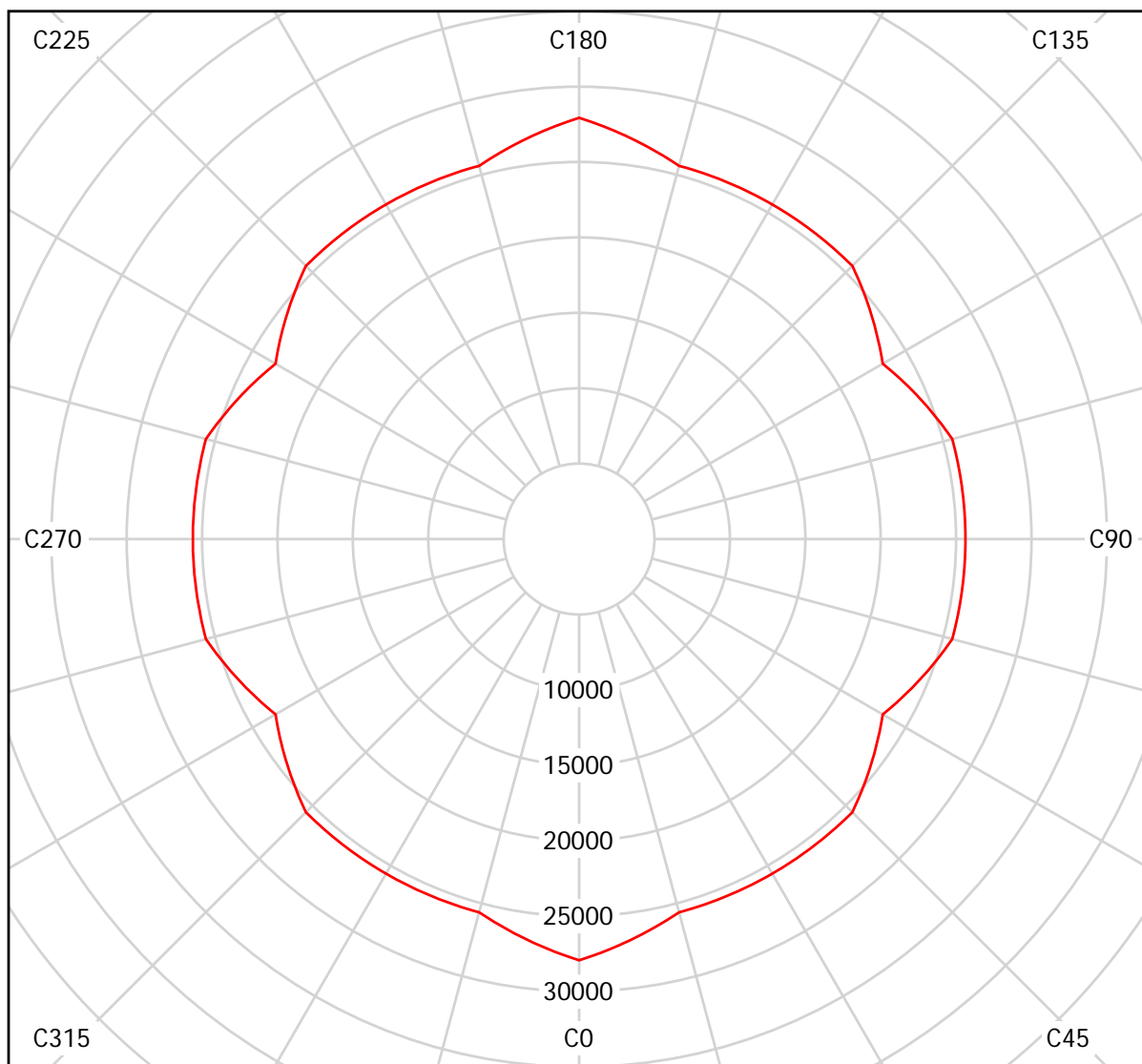
Lamps: 2 x LemTec 70W LED

<b>Glare Rating according to UGR</b>											
$\rho$ Ceiling	70	70	50	50	30	70	70	50	50	30	
$\rho$ Walls	50	30	50	30	30	50	30	50	30	30	
$\rho$ Floor	20	20	20	20	20	20	20	20	20	20	
Room dimensions X      Y		viewing direction at right angles to luminaire axis					viewing direction alongside luminaire axis				
2H	2H	22.9	23.8	23.2	24.0	24.2	22.2	23.0	22.5	23.2	23.4
	3H	22.8	23.5	23.1	23.8	24.0	22.1	22.8	22.4	23.0	23.3
	4H	22.7	23.4	23.0	23.7	23.9	22.0	22.7	22.3	22.9	23.2
	6H	22.6	23.3	23.0	23.6	23.8	21.9	22.6	22.2	22.8	23.1
	8H	22.6	23.2	22.9	23.5	23.8	21.9	22.5	22.2	22.8	23.1
	12H	22.6	23.1	22.9	23.4	23.8	21.8	22.4	22.2	22.7	23.0
4H	2H	22.7	23.4	23.0	23.7	24.0	22.0	22.7	22.4	23.0	23.3
	3H	22.6	23.2	22.9	23.5	23.8	21.9	22.5	22.3	22.8	23.1
	4H	22.5	23.0	22.9	23.4	23.7	21.8	22.3	22.2	22.7	23.0
	6H	22.4	22.9	22.9	23.2	23.6	21.8	22.2	22.2	22.5	22.9
	8H	22.4	22.8	22.8	23.2	23.6	21.7	22.1	22.1	22.5	22.9
	12H	22.4	22.7	22.8	23.1	23.5	21.7	22.0	22.1	22.4	22.8
8H	4H	22.4	22.8	22.8	23.2	23.6	21.7	22.1	22.1	22.5	22.9
	6H	22.3	22.6	22.8	23.0	23.5	21.6	21.9	22.1	22.4	22.8
	8H	22.3	22.5	22.7	23.0	23.4	21.6	21.8	22.1	22.3	22.8
	12H	22.2	22.4	22.7	22.9	23.4	21.5	21.8	22.0	22.2	22.7
12H	4H	22.4	22.7	22.8	23.1	23.5	21.7	22.0	22.1	22.4	22.8
	6H	22.3	22.5	22.7	23.0	23.4	21.6	21.8	22.1	22.3	22.8
	8H	22.2	22.4	22.7	22.9	23.4	21.5	21.8	22.0	22.2	22.7
variation of viewer's position for luminaire spacing S											
S = 1.0H	+2.5 / -4.8					+2.4 / -5.3					
S = 1.5H	+4.2 / -25.1					+4.5 / -24.4					
S = 2.0H	+6.2 / -94.8					+6.5 / -94.1					
standard table	BK00					BK00					
adjustment summand	4.0					3.3					
adjusted glare indexes related to 11.200 lm total luminous flux											

The UGR values are calculated in line with CIE Publ. 117. Spacing-to-Height-Ratio = 0.25.

### LemTec Headlight LEM-F570TS 140W / Luminance Graph

Luminaire: LemTec Headlight LEM-F570TS 140W  
Lamps: 2 x LemTec 70W LED

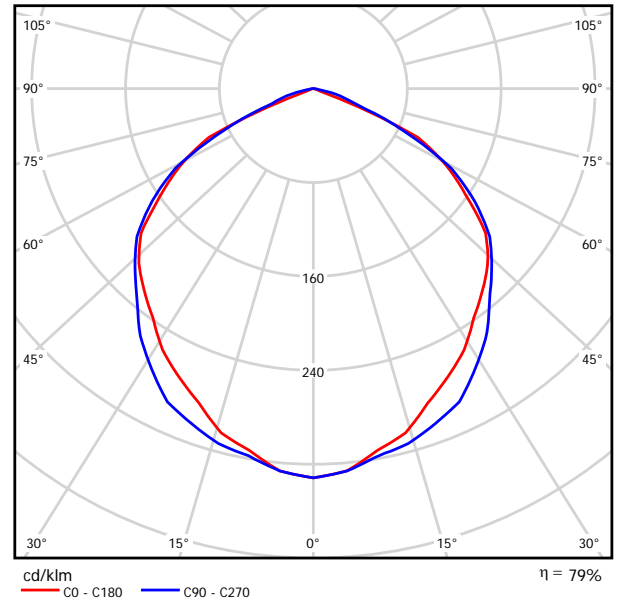


cd/m<sup>2</sup>  
— g = 55.0°    — g = 65.0°    — g = 75.0°

**LemTec Floodlight LEM-F570FG 140W / Luminaire Data Sheet**

Please find a picture of this luminaire in our catalogue.

Light emission 1:



Luminaire classification according to DIN: A40  
CIE Flux Code: 52 87 100 100 80

Light emission 1:

Glare rating according to UGR												
h Ceiling		70	70	50	50	30	70	70	50	50	30	
h Walls		50	30	50	30	30	50	30	50	30	30	
h Floor		20	20	20	20	20	20	20	20	20	20	
Room Dimensions X Y		viewing direction at right angles to luminaire axis					viewing direction alongside luminaire axis					
2H	2H	25.4	26.6	25.7	26.8	27.1	25.4	26.6	25.7	26.9	27.1	
	3H	25.8	26.9	26.1	27.2	27.4	26.0	27.1	26.3	27.4	27.6	
	4H	25.7	26.8	26.1	27.0	27.3	26.0	27.1	26.4	27.4	27.6	
	6H	25.7	26.6	26.0	26.9	27.2	26.0	27.0	26.4	27.3	27.6	
	8H	25.6	26.5	26.0	26.8	27.2	26.0	26.9	26.3	27.2	27.5	
	12H	25.6	26.5	25.9	26.8	27.1	26.0	26.8	26.3	27.1	27.5	
4H	2H	25.9	26.9	26.2	27.2	27.5	25.9	26.9	26.2	27.2	27.5	
	3H	26.3	27.1	26.6	27.5	27.8	26.5	27.4	26.9	27.7	28.0	
	4H	26.2	27.0	26.6	27.3	27.7	26.6	27.4	27.0	27.7	28.1	
	6H	26.1	26.8	26.5	27.2	27.6	26.6	27.3	27.0	27.6	28.0	
	8H	26.1	26.7	26.5	27.1	27.5	26.6	27.2	27.0	27.6	28.0	
	12H	26.1	26.6	26.5	27.0	27.4	26.5	27.1	27.0	27.5	27.9	
8H	4H	26.1	26.7	26.6	27.1	27.5	26.5	27.1	27.0	27.5	27.9	
	6H	26.1	26.6	26.5	27.0	27.4	26.5	27.0	27.0	27.4	27.9	
	8H	26.0	26.5	26.5	26.9	27.4	26.5	26.9	27.0	27.4	27.8	
	12H	26.0	26.4	26.5	26.8	27.3	26.5	26.8	27.0	27.3	27.8	
	12H	4H	26.1	26.6	26.6	27.1	27.5	26.5	27.0	27.0	27.5	27.9
		6H	26.0	26.5	26.5	26.9	27.4	26.5	26.9	27.0	27.4	27.8
8H		26.0	26.4	26.5	26.8	27.3	26.5	26.8	27.0	27.3	27.8	
variation of viewer's position for luminaire spacing S												
S = 1.0H		+0.4 / -0.6					+0.1 / -0.3					
S = 1.5H		+0.5 / -0.7					+0.6 / -0.7					
S = 2.0H		+1.6 / -6.5					+1.6 / -3.2					
standard table		BK01					BK02					
adjustment summand		7.3					8.1					
adjusted glare indexes related to 11.200 lm total luminous flux												

**LemTec Floodlight LEM-F570FG 140W / UGR Table**

Luminaire: LemTec floodlight LEM-F570FG 140W

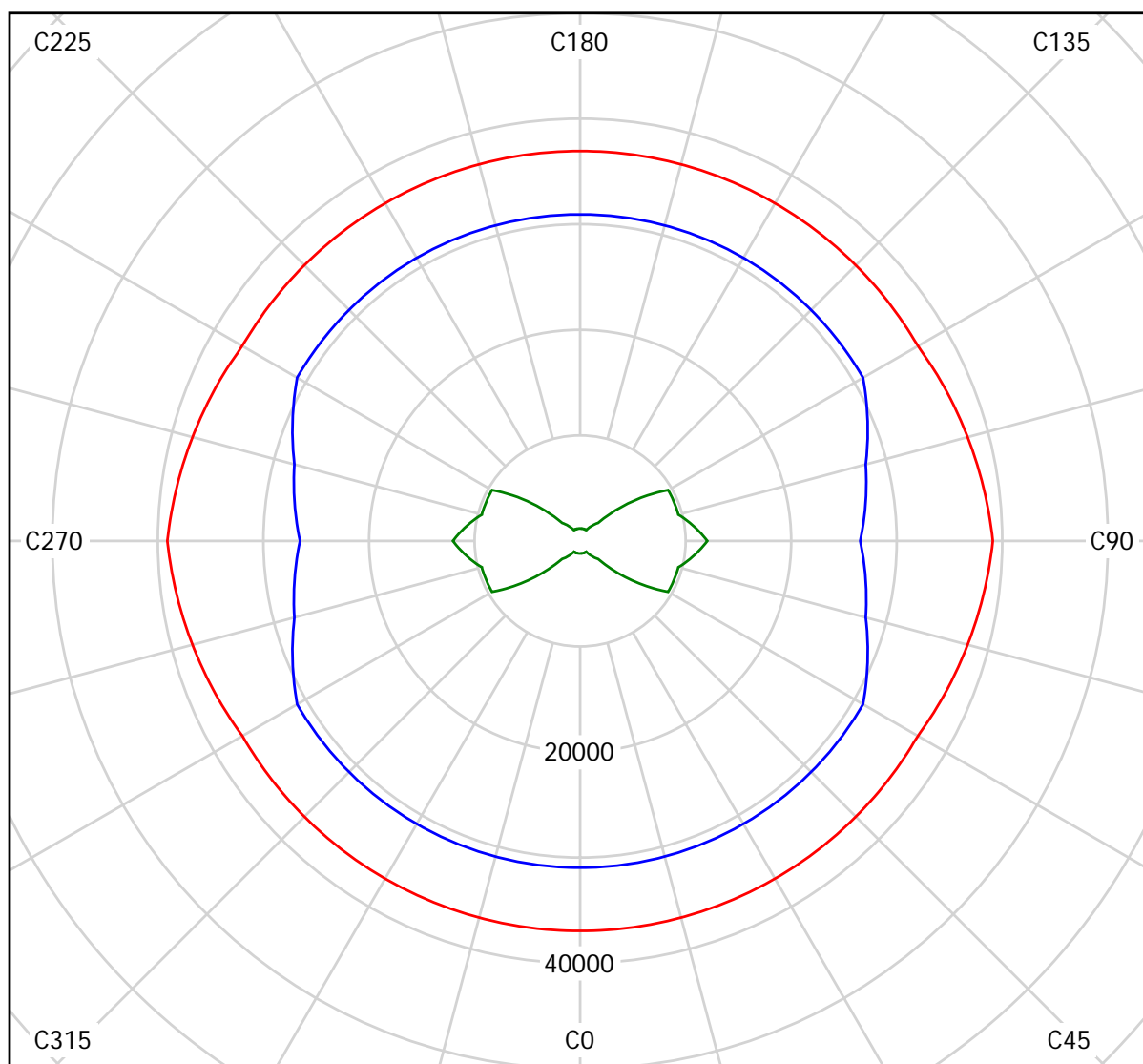
Lamps: 2 x LemTec 70W LED

<b>Glare Rating according to UGR</b>											
$\rho$ Ceiling	70	70	50	50	30	70	70	50	50	30	
$\rho$ Walls	50	30	50	30	30	50	30	50	30	30	
$\rho$ Floor	20	20	20	20	20	20	20	20	20	20	
Room dimensions X      Y		viewing direction at right angles to luminaire axis					viewing direction alongside luminaire axis				
2H	2H	25.4	26.6	25.7	26.8	27.1	25.4	26.6	25.7	26.9	27.1
	3H	25.8	26.9	26.1	27.2	27.4	26.0	27.1	26.3	27.4	27.6
	4H	25.7	26.8	26.1	27.0	27.3	26.0	27.1	26.4	27.4	27.6
	6H	25.7	26.6	26.0	26.9	27.2	26.0	27.0	26.4	27.3	27.6
	8H	25.6	26.5	26.0	26.8	27.2	26.0	26.9	26.3	27.2	27.5
	12H	25.6	26.5	25.9	26.8	27.1	26.0	26.8	26.3	27.1	27.5
4H	2H	25.9	26.9	26.2	27.2	27.5	25.9	26.9	26.2	27.2	27.5
	3H	26.3	27.1	26.6	27.5	27.8	26.5	27.4	26.9	27.7	28.0
	4H	26.2	27.0	26.6	27.3	27.7	26.6	27.4	27.0	27.7	28.1
	6H	26.1	26.8	26.5	27.2	27.6	26.6	27.3	27.0	27.6	28.0
	8H	26.1	26.7	26.5	27.1	27.5	26.6	27.2	27.0	27.6	28.0
	12H	26.1	26.6	26.5	27.0	27.4	26.5	27.1	27.0	27.5	27.9
8H	4H	26.1	26.7	26.6	27.1	27.5	26.5	27.1	27.0	27.5	27.9
	6H	26.1	26.6	26.5	27.0	27.4	26.5	27.0	27.0	27.4	27.9
	8H	26.0	26.5	26.5	26.9	27.4	26.5	26.9	27.0	27.4	27.8
	12H	26.0	26.4	26.5	26.8	27.3	26.5	26.8	27.0	27.3	27.8
12H	4H	26.1	26.6	26.6	27.1	27.5	26.5	27.0	27.0	27.5	27.9
	6H	26.0	26.5	26.5	26.9	27.4	26.5	26.9	27.0	27.4	27.8
	8H	26.0	26.4	26.5	26.8	27.3	26.5	26.8	27.0	27.3	27.8
variation of viewer's position for luminaire spacing S											
S = 1.0H	+0.4 / -0.6					+0.1 / -0.3					
S = 1.5H	+0.5 / -0.7					+0.6 / -0.7					
S = 2.0H	+1.6 / -6.5					+1.6 / -3.2					
standard table	BK01					BK02					
adjustment summand	7.3					8.1					
adjusted glare indexes related to 11.200 lm total luminous flux											

The UGR values are calculated in line with CIE Publ. 117. Spacing-to-Height-Ratio = 0.25.

**LemTec Floodlight LEM-F570FG 140W / Luminance Graph**

Luminaire: LemTec floodlight LEM-F570FG 140W  
Lamps: 2 x LemTec 70W LED



cd/m<sup>2</sup>  
— g = 55.0°    — g = 65.0°    — g = 75.0°

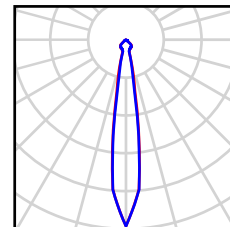


### Outdoor Sketch 1 / Luminaire List of Items

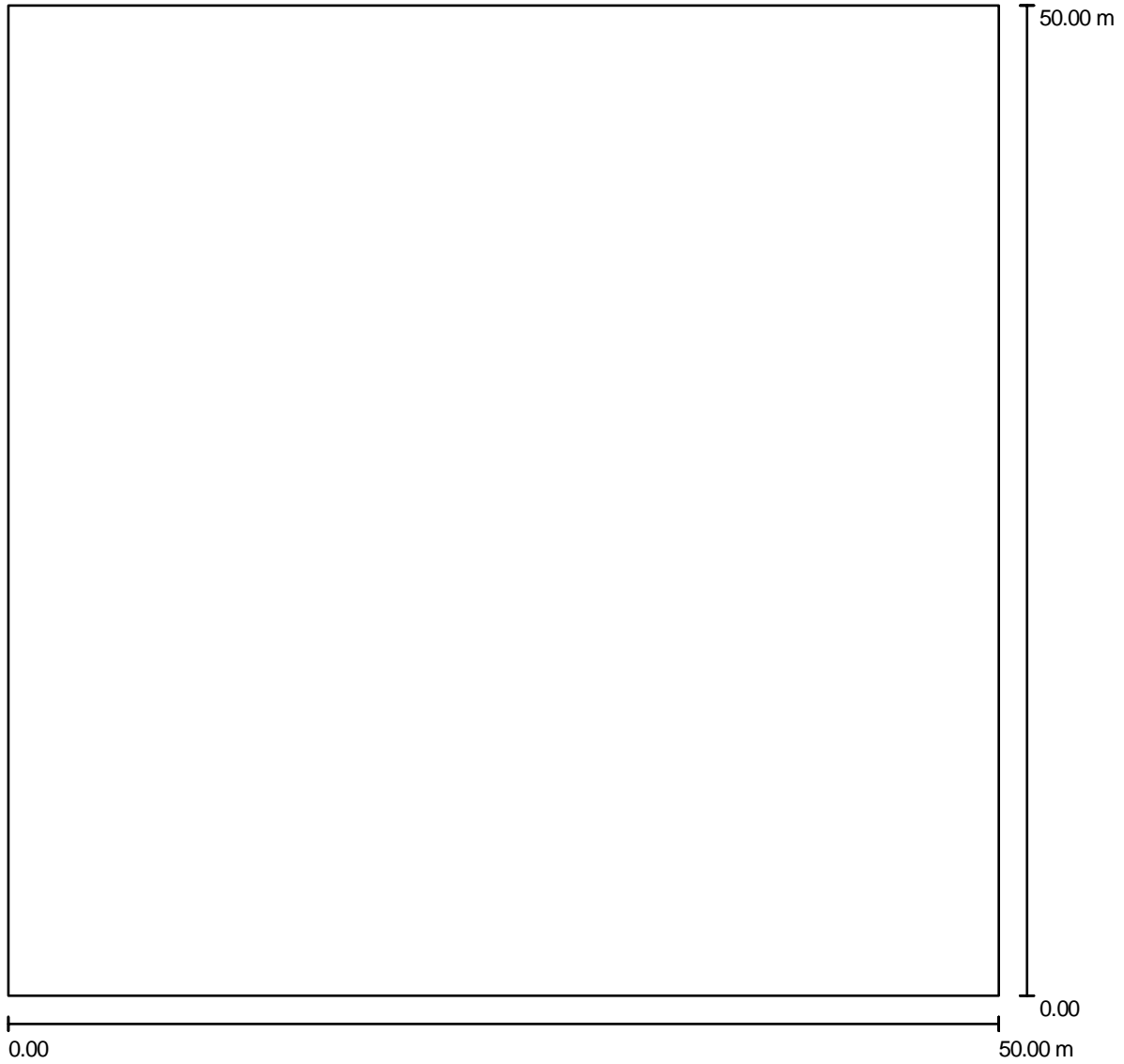
8 pieces

LemTec headlight LEM-F570TS 140W  
article no.: headlight  
luminaire luminous flux: 11.200 lm  
luminaire performance: 140.0 W  
luminaire classification according to DIN: A60  
CIE Flux Code: 86 100 100 96 92  
equipment: 2 x LemTec 70W LED  
(adjustment factor 1.000).

Please find a picture  
of the luminaire  
in our catalogue.

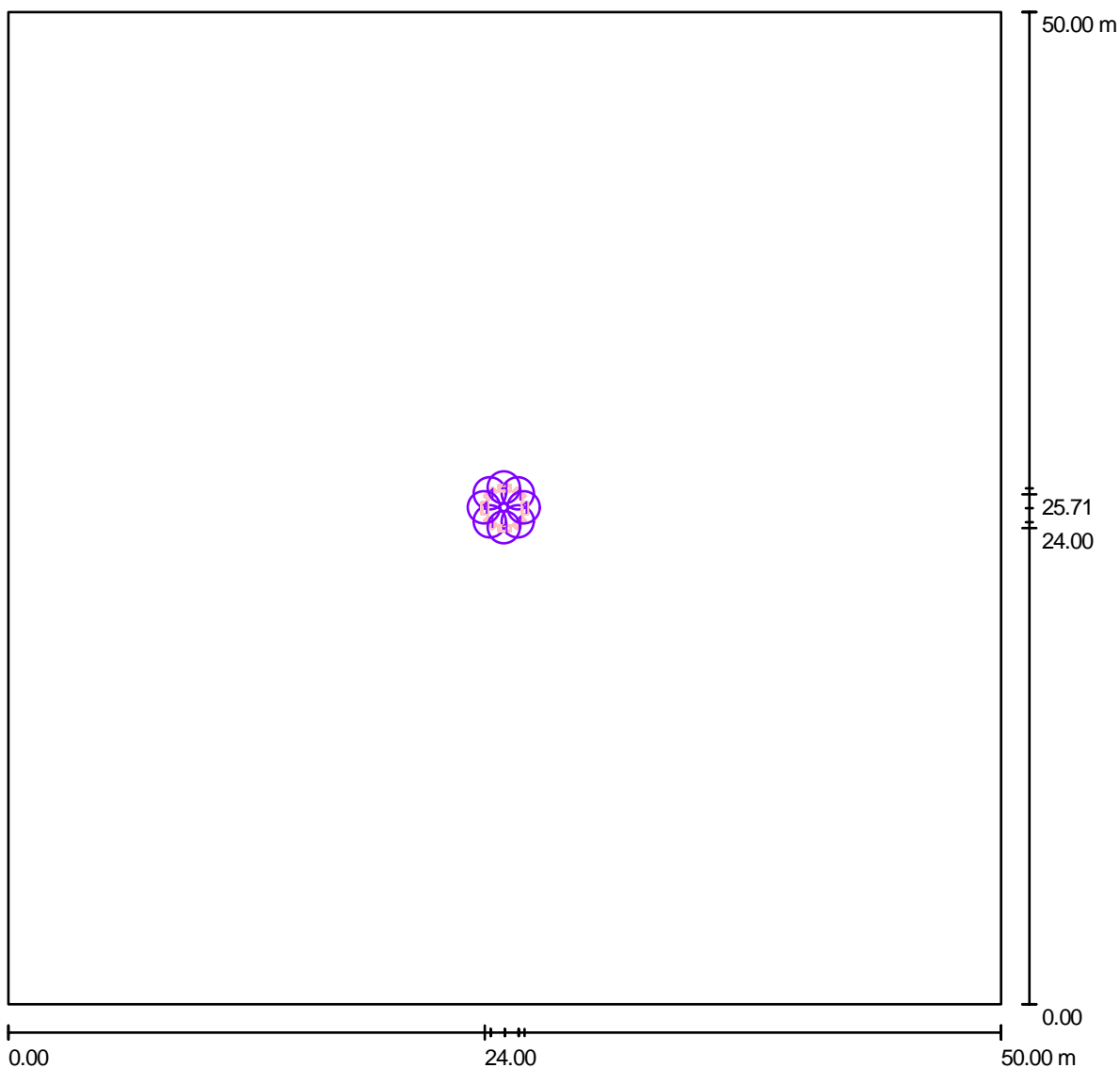


**Outdoor Sketch 1 / Ground Plan**



Scale 1 : 358

**Outdoor Sketch 1 / Luminaire (Position Plan)**



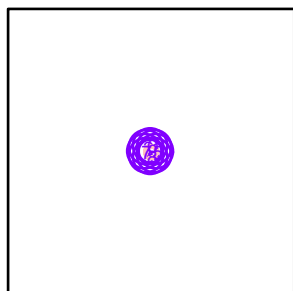
Scale 1 : 358

**Luminaire list of items**

No.	pieces	description
1	8	LemTec headlight LEM-F570TS 140W

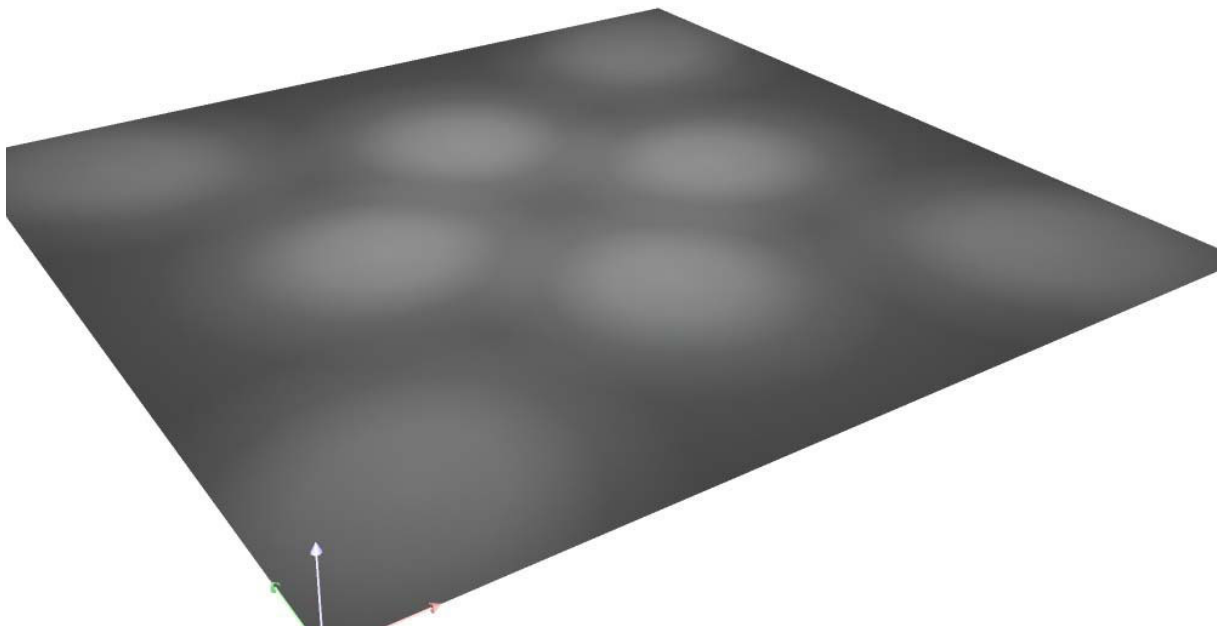
**Outdoor Sketch 1 / Luminaire (Coordinates List)****LemTec headlight LEM-F570TS 140W**

11.200 lm, 140.0 W, 1 x 2 x LemTec 70W LED (adjustment factor 1.000).

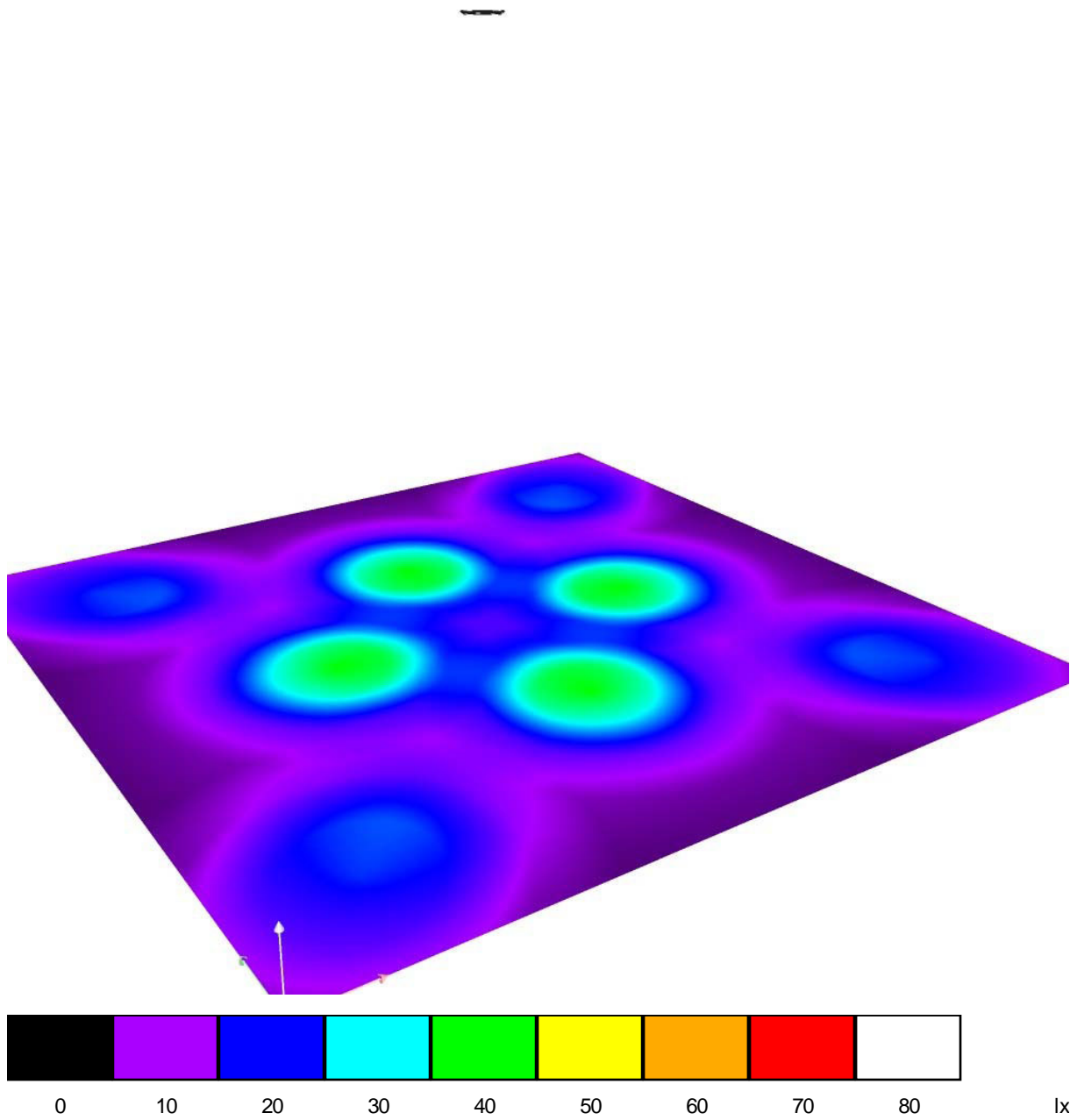


No.	position [m]			rotation [°]		
	X	Y	Z	X	Y	Z
1	25.707	25.707	36.000	0.0	-35.0	45.0
2	24.293	25.707	36.000	0.0	-35.0	135.0
3	24.293	24.293	36.000	0.0	-35.0	-135.0
4	25.707	24.293	36.000	0.0	-35.0	-45.0
5	26.000	25.000	36.000	0.0	-15.0	0.0
6	25.000	26.000	36.000	0.0	-15.0	90.0
7	24.000	25.000	36.000	0.0	-15.0	180.0
8	25.000	24.000	36.000	0.0	-15.0	-90.0

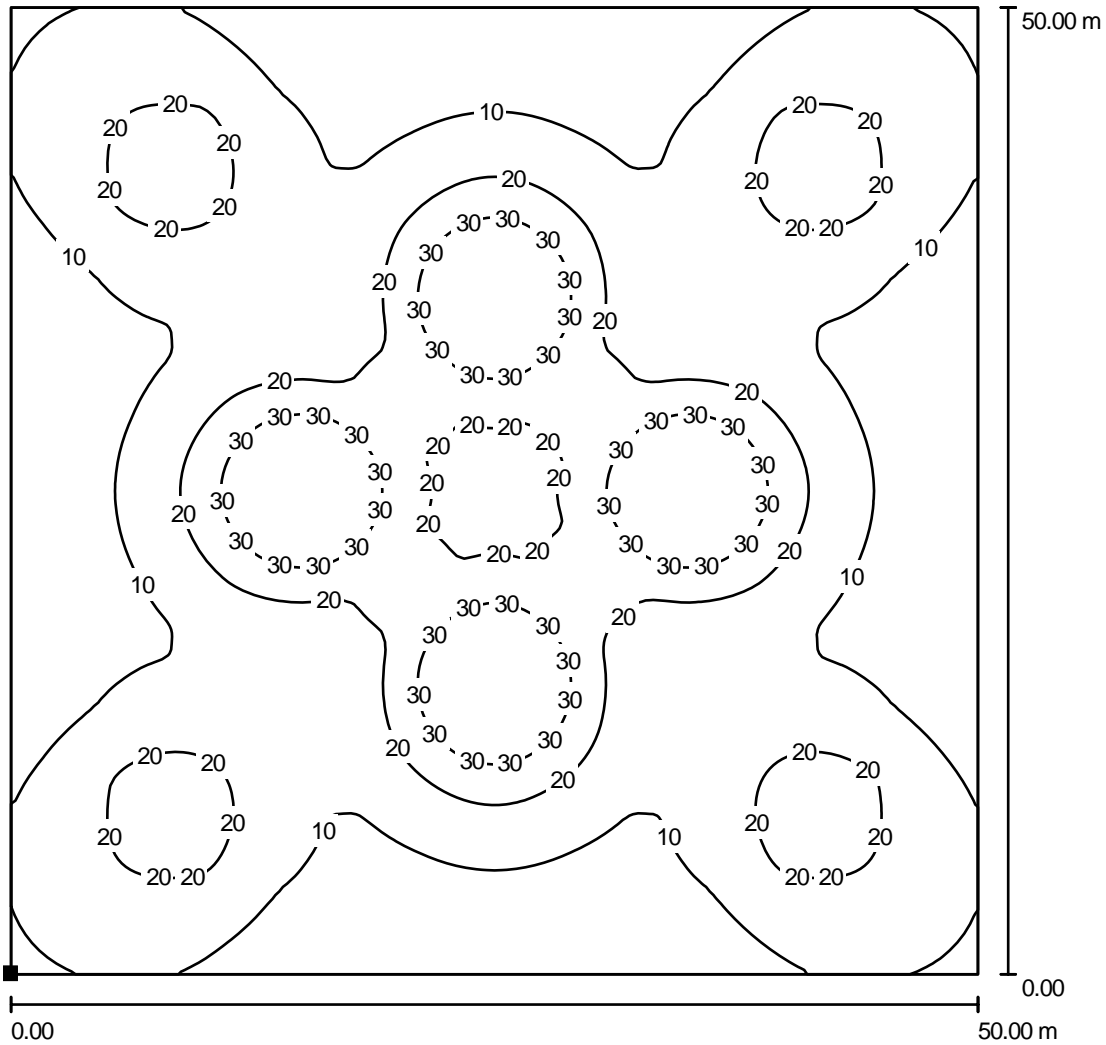
**Outdoor Sketch 1 / 3D Rendering**



**Outdoor Sketch 1 / Pseudo-Colour Rendering**



**Outdoor Sketch 1 / Floor Element 1 / Area 1 / Isolines (E)**



values in lux, scale 1 : 391

position of the surface in the outdoor sketch:  
marked point:  
(0.000 m, 0.000 m, 0.000 m)



raster: 128 x 128 points

$E_m$ [lx]	$E_{min}$ [lx]	$E_{max}$ [lx]	$g_1$	$g_2$
16	4.86	40	0.308	0.123